

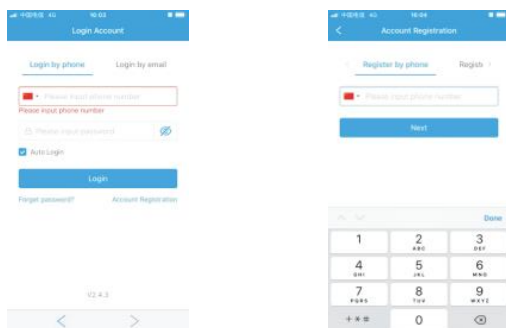
## 1. Download the App

Search "USmart Go"  on Apple App Store or Google Play for your iOS/Android device.

## 2. Basic Setting

### 1) Create an account

Launch the "USmart Go" App and register an account, you can register by your phone number or email address.



### 2) Setting Security Password

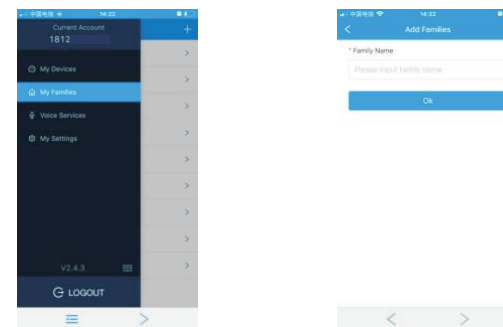
You'll need to setup a security password for two-step verification.

Following the steps: Menu sidebar -> "My Settings" -> "Set security password".



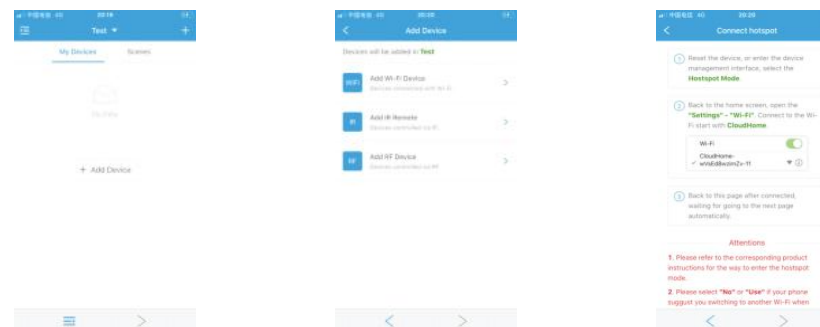
### 3) Create a Family

Every device associated with a Family, following the steps to create a family: Menu sidebar -> "My Families" -> "+" button.

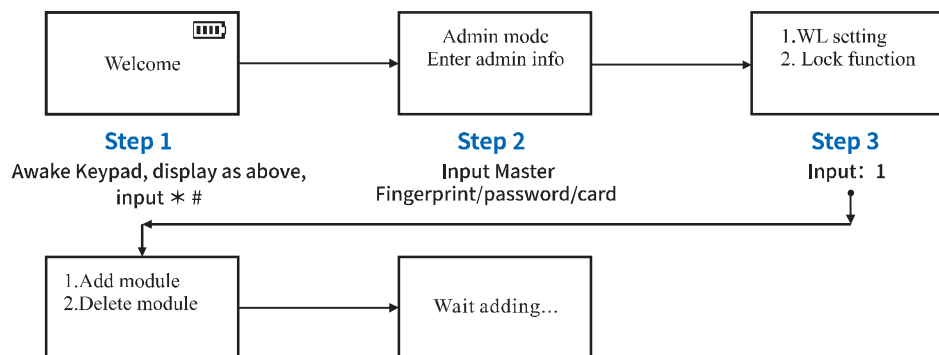


## 3. Connect the Lock

Launch the App, click the "ADD" button at the upper right corner, choose "Add Wi-Fi Device/hospot", you'll see a screen as below:



• Now set on lock as below



**Step 1**  
Awake Keypad, display as above,  
input \* #

**Step 2**  
Input Master  
Fingerprint/password/card

**Step 3**  
Input: 1

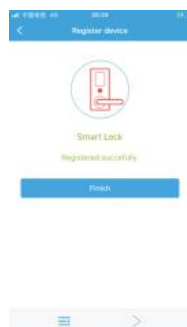
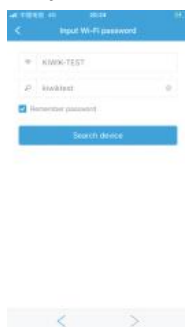
**Step 4**

Input: 1 to enter the network pairing mode

Go to the WLAN setting on your phone, and connect to the Wi-Fi with the name as "CloudHome-XXXX-16".



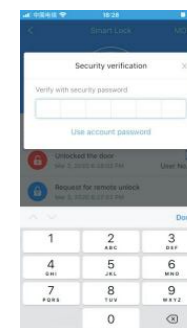
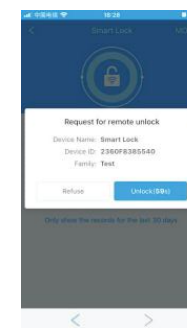
- Go back to the App, choose the Wi-Fi of your home and input the password. Click "Search device" and waiting for connection.



## 4. USmart Go Function

### 1) Remote Unlock

Press "🔔" on the lock to trigger a remote unlock request, you'll see a popup window on our app, enter your security password to unlock.



### 2) Remark an User

Click the event list to remark an user

